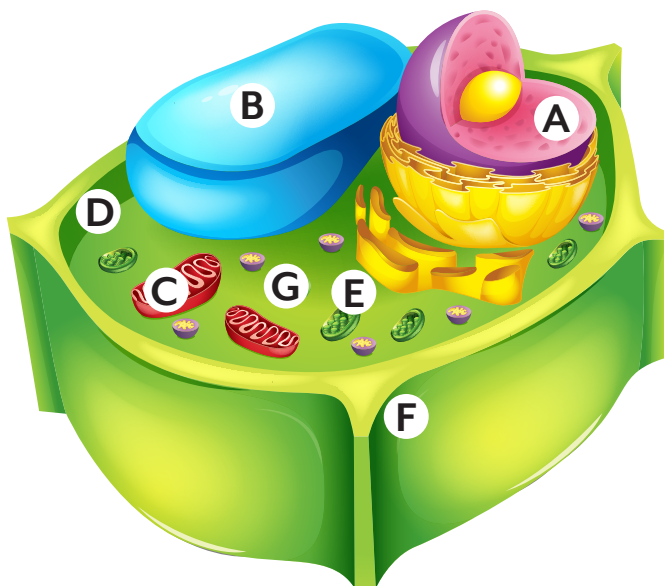


## Sample Lesson #1

### How do Plant and Animal Cells Differ?

Although they are very similar, plant and animal cells do have some differences. Outside of the cell membrane, a plant cell also has a **cell wall**. The cell wall helps all the plant cells stick together, and this supports the plant. Plant cells also have chloroplasts. Chloroplasts contain chlorophyll which makes plants green. **Chloroplasts** make food for the plant. Animal cells do not have chloroplasts.

1. Label this diagram of a plant cell. Find this diagram in the *Help Pages*.



- A) \_\_\_\_\_
- B) \_\_\_\_\_
- C) \_\_\_\_\_
- D) \_\_\_\_\_
- E) \_\_\_\_\_
- F) \_\_\_\_\_
- G) \_\_\_\_\_

2. Another word for a living thing is an \_\_\_\_\_.
3. The smallest part of a living thing is a \_\_\_\_\_.
4. Consumers get their food from producers in a transfer of energy known as \_\_\_\_\_.  
the food chain    the water cycle    metamorphosis    deforestation
5. The word *carnivore* means \_\_\_\_\_.  
meat-eater    plant-eater    producer    animal
6. An herbivore will never eat \_\_\_\_\_.  
plants    animals    seeds    nuts

## Repeated Trials

Scientists want to be sure that the results they get from an experiment are accurate. They want to **verify** (show) that the results of the experiment were not just a coincidence. The only way to be sure is to repeat or **replicate** the experiment. Sometimes an experiment is replicated several times – even hundreds of times – before a scientist or group of scientists is willing to say that the results are **conclusive** (definite). Scientists are looking for **evidence** – facts that support their conclusions. If there is not enough evidence, the results are **inconclusive**, which means that nothing has been proven.



### 7. Why do scientists often repeat an experiment?

- A) They need to verify their results.
- B) Most scientists enjoy spending time in the lab.
- C) Scientists are usually paid by the hour.
- D) It is important to use up all materials in a science lab.

### 8. Which scientific instrument would you use to examine the surface of a rock?

thermometer      barometer      magnifying glass      rock hammer

### 9. Match each word with its meaning.

- |                    |                    |
|--------------------|--------------------|
| _____ verify       | A) proving nothing |
| _____ replicate    | B) definite        |
| _____ conclusive   | C) repeat          |
| _____ evidence     | D) show or support |
| _____ inconclusive | E) facts           |