



Level 3

Social Studies

2nd Edition

Help Pages

Help Pages

Glossary

acre	a large area of land
adapt	adjust to something new
adobe	made of clay and straw
agricultural	a type of farm that grows crops or raises animals
ancestor	a family member who lived before us
appoint	choose; leaders can be appointed
assembly line	a team of workers, each making one part
barter	trading one thing for another
calendar	a type of grid that shows time
capital	the city where most government leaders work
capital resources	the things workers use to make goods or give services
capitol	a special building where the leaders of a government work
cardinal directions	north, south, east, and west
cause	the reason something happens
century	one hundred years
Cherokee	a large group of Native American people; lived in the Southeast until they were moved west by the U.S. government
citizen	a person who lives in a country and shares the same rights with other citizens; a member of a community
city	a community where many people live and work; urban area
city council	the legislative branch of a city
coast	land on the edge of a large body of water

Help Pages

Glossary

colony	an area under the rule of another country
communication	how people pass information to one another
community	a group of people with something in common
compass rose	the symbol that shows directions on a map
consequence	what happens because of something else
constitution	a written plan for a government
consumer	a person who buys goods and services
continent	a large body of land
country	an area made up of many regions or states; nation
culture	a way of living
currency	the money a country uses
custom	a special activity that the people in a group join in
dairy	a type of farm that produces milk and other dairy products
Declaration of Independence	a document written in 1776 that explained why the people in America were not happy under British rule
degree	this is the label for a line of latitude or longitude on a map; the degree symbol is a small circle above and to the right of a number (e.g. 60°)
demand	how much of a good or service consumers want
democracy	a type of government with rulers picked by the citizens
desert	an area that receives very little rainfall

Help Pages

Glossary

dollar	the basic unit of currency of the United States
earn	to get paid for doing a job
Eastern Hemisphere	half of Earth, east of the Prime Meridian
economics	the study of how consumers satisfy their wants and needs
effect	something that happens because of something else
elect, election	to choose; citizens vote for leaders
elevated	raised up
Equator	the latitude line at 0°; divides Earth into the Northern Hemisphere and Southern Hemisphere
euro	the basic unit of currency of a group of European countries
executive branch	the branch of government that enforces the law
export	a good or service one country sells to another
explorer	a person who journeys into unknown lands
free enterprise	an economy in which a person can start and operate any legal business
game	animals hunted for food
globe	a model of Earth
good	an object you can see, touch, and buy
government	a group of people who make laws and run communities
governor	the leader of a state

Help Pages

Glossary

green space	land that has not been built on, with trees, grass, or other natural elements
grid	a series of horizontal and vertical lines
group	a number of people
harvest	gathering of ripe crops
hemisphere	half of a sphere; half of the Earth
hill	raised land that is smaller than a mountain
horizontal	going side to side \longleftrightarrow
human resources	the people who make a good or provide a service
immigrant	a person who moves from one country to another
import	a good or service one country buys from another
income	the money one earns for doing a job
income tax	money the government takes out of a person's pay
independence	freedom from someone else's rule
Indians	the first people to live in the Americas; sometimes called Native Americans
interest	extra money a person earns for keeping money in a bank
intermediate directions	the areas between the cardinal directions on a compass rose (northeast, northwest, southwest, and southeast)
international	involving two or more countries
island	land with water all around it
issues	topics discussed by candidates in an election

Help Pages Glossary

judge	a member of the judicial branch
judicial branch	the branch of government that interprets the law; judiciary
judiciary	the judicial branch of government
lake	a body of water surrounded by land
landform	a natural formation on the surface of Earth
landform region	an area with common landforms
landmark	something that helps people to know a place
latitude	lines on a map that go side to side; latitude describes distance from the Equator
law	a rule made by the government
legislative branch	the branch of government that makes laws; legislature
legislature	the law-making branch of government
leader	someone who is in charge of other people
local government	a government that runs a town or city
longitude	lines on a map that go up and down; longitude describes distance from the Prime Meridian
map grid	horizontal and vertical lines that divide a map into boxes
map key	shows what a symbol on a map means
map scale	a line on a map that is used to measure distance
mayor	the leader of a town or city
migrate	move from one place to another

Help Pages

Glossary

monarchy	a type of government ruled by a king or queen
mountain	land that rises high above Earth's surface; has a peak at the top
mountain range	a group of mountains
Navajo	a large group of Native American people; lived in the Northwest and migrated to the Southwest
national capital	the city where the members of the national government work; Washington, D.C.
national government	the government that runs the United States
Native Americans	the first people to live in the Americas; sometimes called Indians
natural resources	things found in nature that people use (such as sunlight, wind, water, and soil)
need	a thing that everyone must have to live (such as food, water, clothing, shelter, and air)
neighborhood	the place where you live with your neighbors
North Pole	the very top of a globe
northeast	the direction between north and east
Northern Hemisphere	the top half of Earth
northwest	the direction between north and west
ocean	a large body of saltwater
peninsula	land with water on three sides
pilgrim	a person who travels for religious reasons

Help Pages

Glossary

plain	a large, flat area of land on Earth's surface
plateau	land that rises above Earth's surface; has a flat top
Pony Express	a short-lived transportation service; men on horseback carried mail west
President	the leader of the United States
Prime Meridian	the longitude line at 0°; divides Earth into the Eastern Hemisphere and Western Hemisphere
produce	to make
profit	the money a business has left after all expenses have been paid
public transportation	a way for people to get around without driving their cars (such as buses, trolley cars, subways, and boats)
region	an area that has some things in common
residential	an area where people live
responsibilities	the things citizens do for the good of their communities
revolution	a sudden change
Revolutionary War	a battle between Great Britain and the 13 Colonies; the conflict that led to the creation of the U.S.
rights	the things all citizens deserve which are protected by the government
river	a body of water that moves
route	a path from one place to another
rural community	a community with open land and few people or buildings
sacred	something of religious importance


Help Pages

Glossary

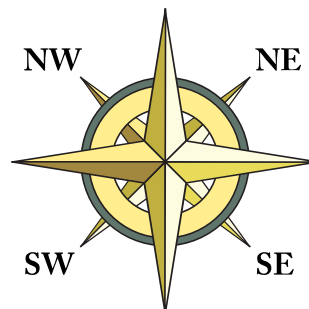
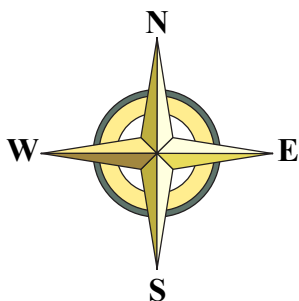
sales tax	money that goes to the state when a person buys something
schedule	a list of times when the bus, train, or subway will stop at a certain place
service	what a worker does to help other people
settler	a person who lives in a colony and helps it grow
South Pole	the very bottom of a globe
southeast	the direction between south and east
Southern Hemisphere	the bottom half of Earth
southwest	the direction between south and west
state	part of the United States with its own laws and leaders
state government	a government that runs a state
subject	a person who must follow the rules of a government
suburb	a community with many people, few tall buildings, and open land around homes
supply	how much of a good or service is available for consumers to buy
supply and demand	a system which helps people decide how much to charge for a good or service
surrender	to give up a battle
symbol	a person, place, thing, or picture that stands for something else
tax	money that the government collects from its citizens
tepee	a cone-shaped tent made of animal skin
telegraph	a machine that sends coded messages through wire

Help Pages

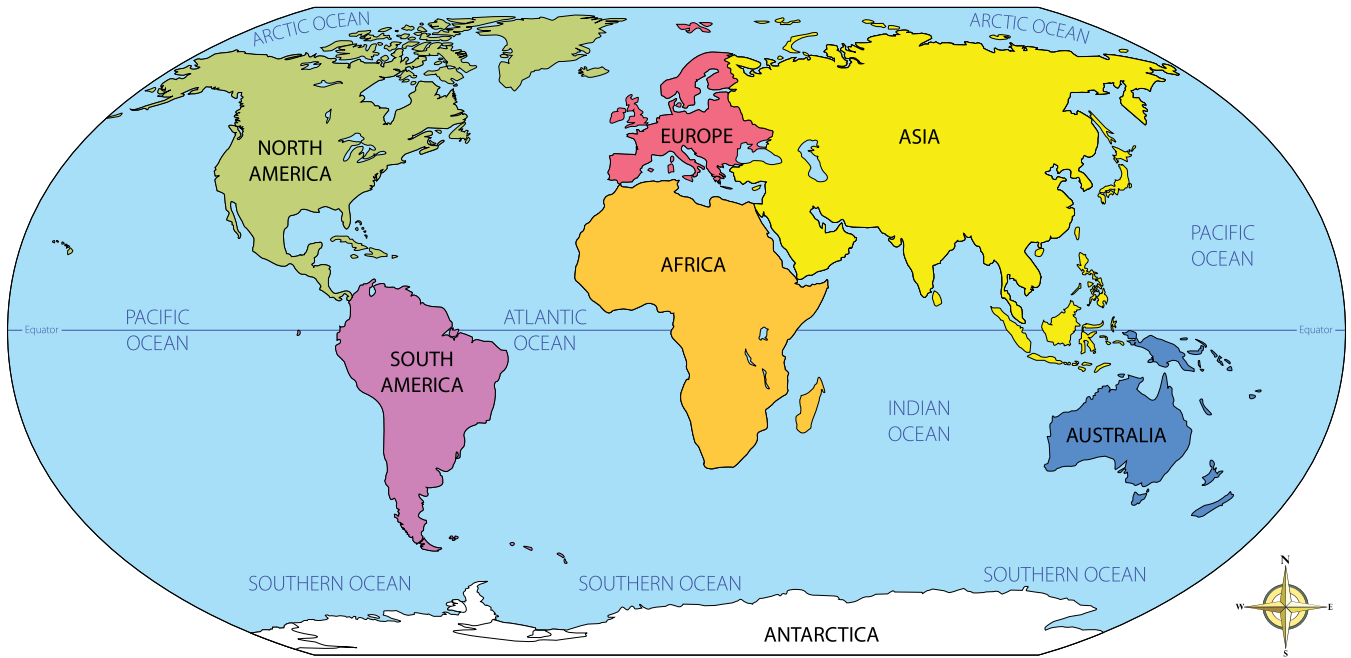
Glossary

timeline	shows dates and events in the order in which they happened
time span	an amount of time
title	a name that tells you what something is about
town	a community that is small and does not have many large buildings
trade	to buy, sell, and exchange goods
tribe	a group of people with the same ancestors and culture
United States Consitution	a document created in 1787 which created the United States government
urban area	a community where many people live and work; city
valley	lowlands with hills or mountains on the sides
vertical	going up and down 
vote	to say who or what you choose
want	a thing that someone would like to have
Western Hemisphere	half of Earth west of the Prime Meridian
world trade	countries trading with other countries
yen	the basic unit of currency of Japan

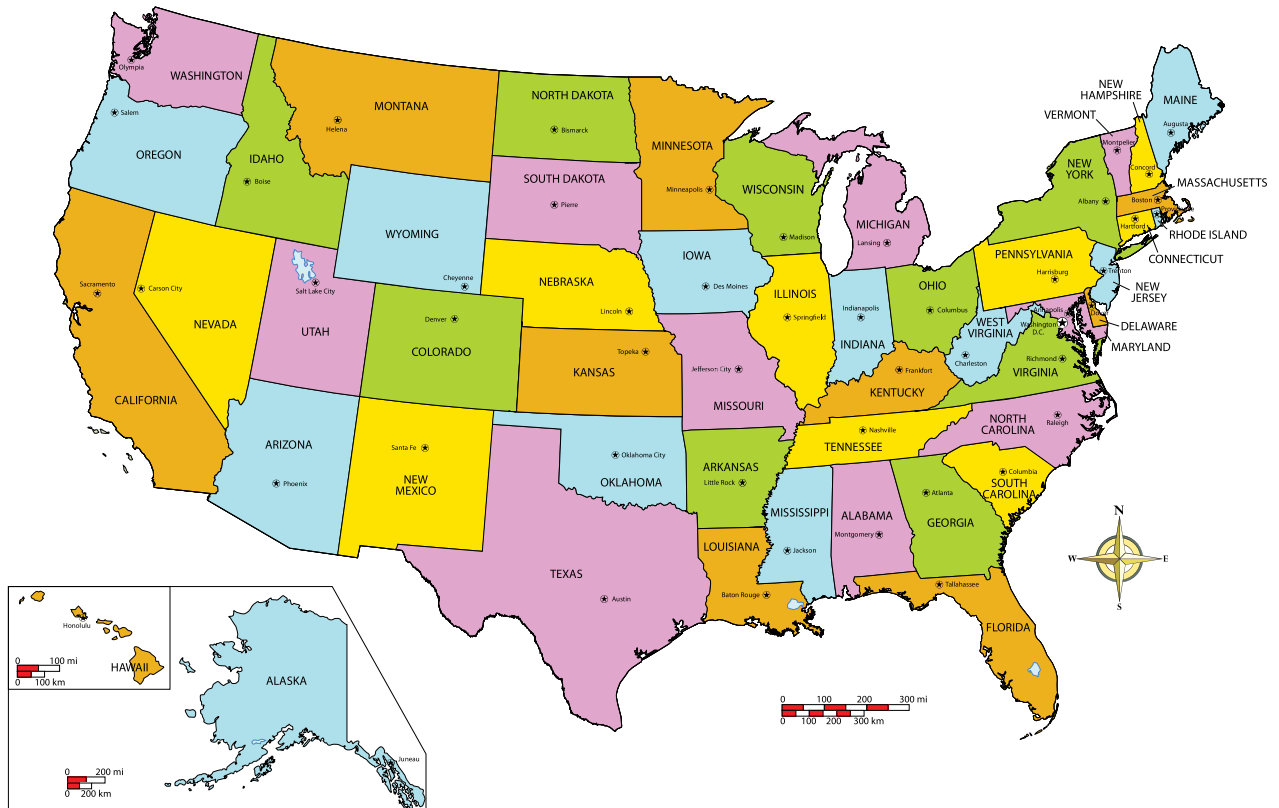
Compass Rose



Help Pages Maps



World Map



United States Map (Political)

Help Pages



United States Map (Physical)

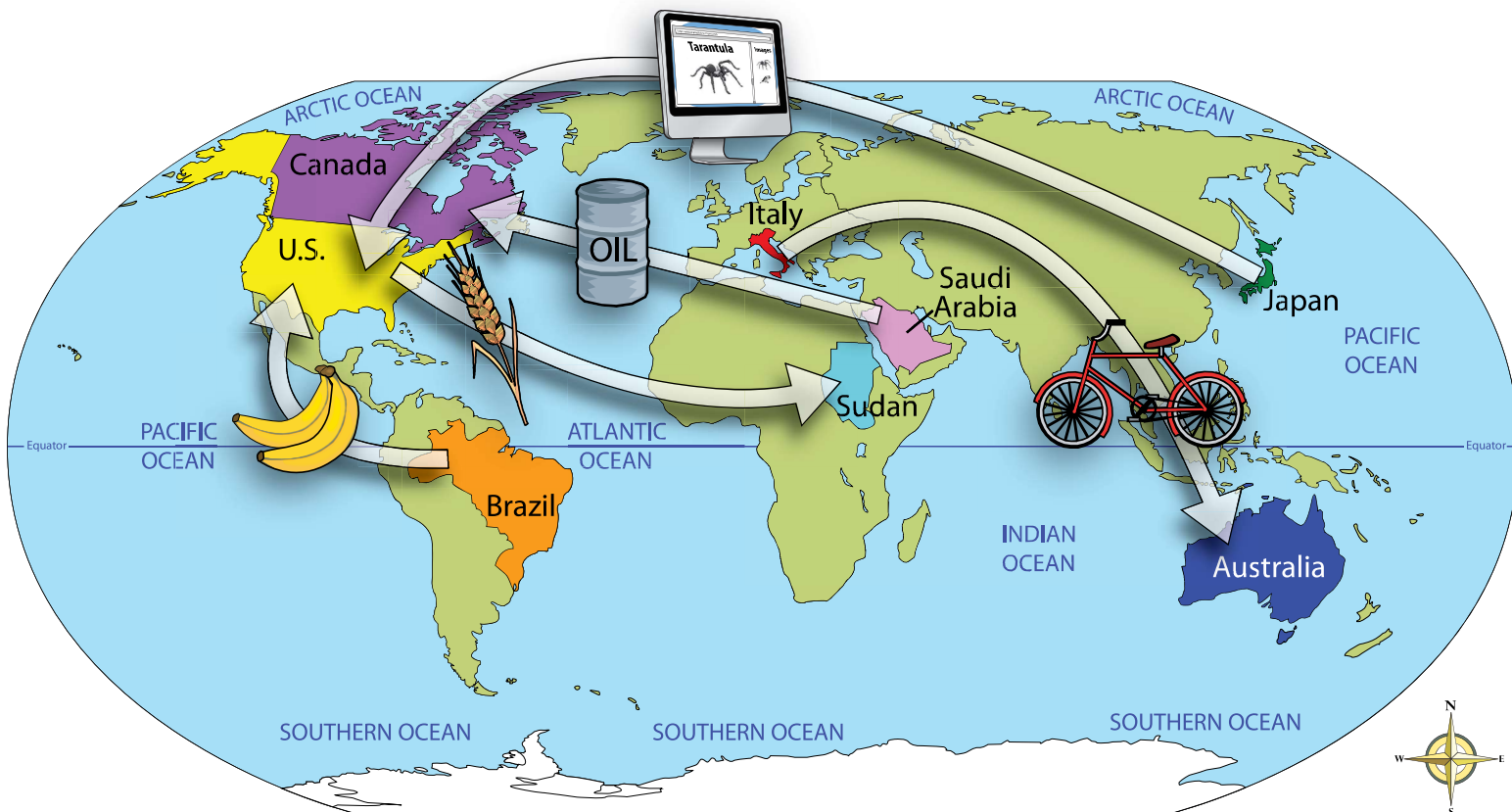
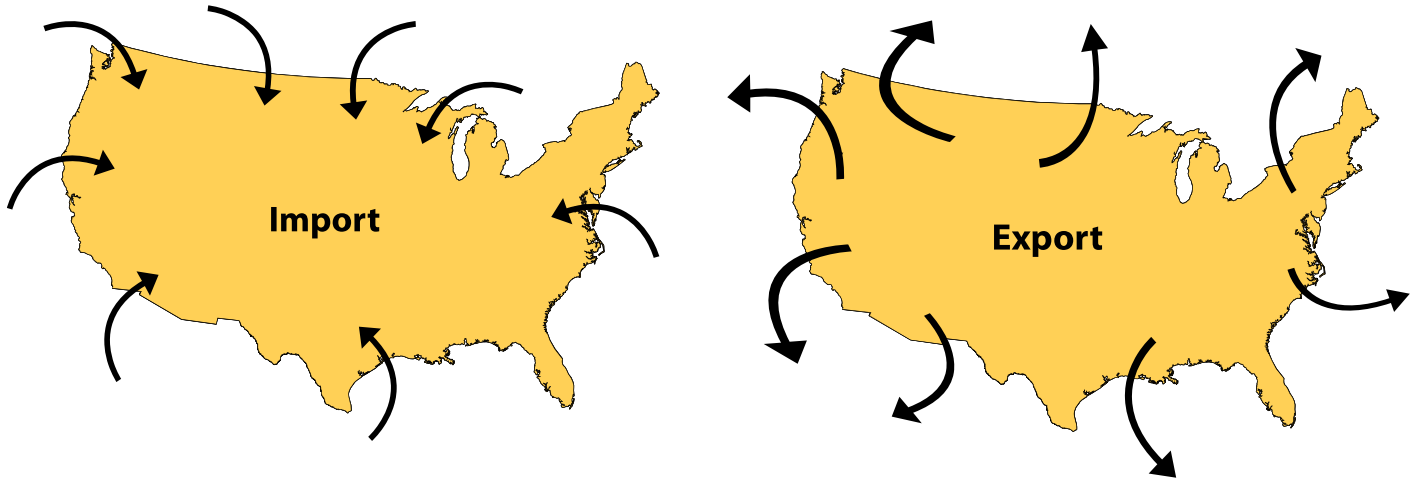
Continents

- Africa
- Antarctica
- Asia
- Australia
- Europe
- North America
- South America

Oceans

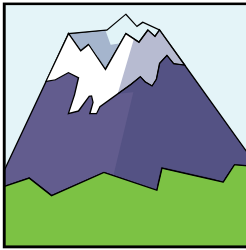
- Arctic
- Atlantic
- Indian
- Pacific
- Southern

Help Pages Maps

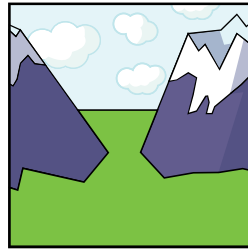


Imports / Exports Map

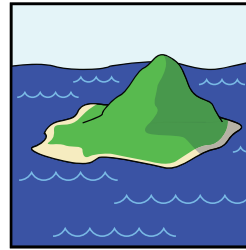
Help Pages



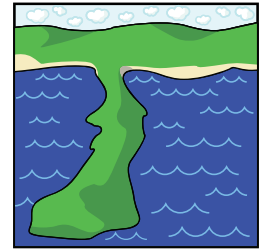
Mountain



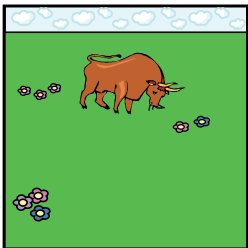
Valley



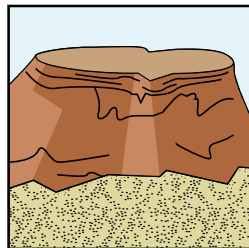
Island



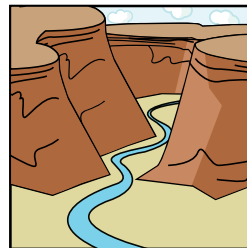
Peninsula



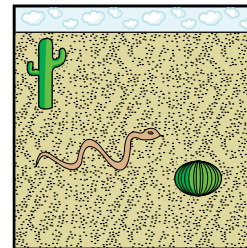
Plain



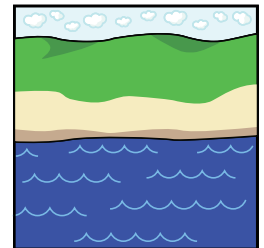
Plateau



Canyon



Desert



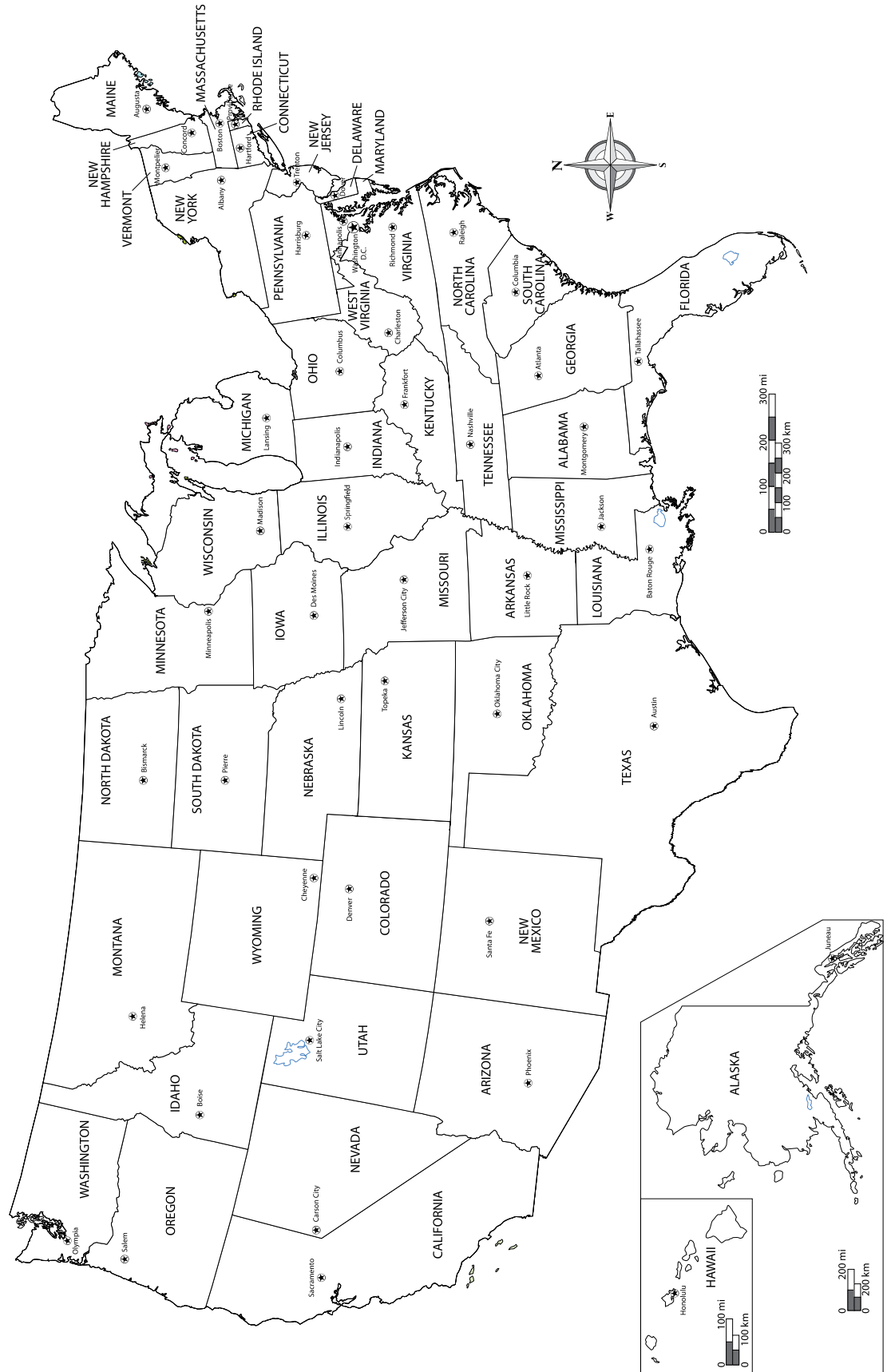
Coast

Types of Landforms

	Definition
Mountain	land that rises high above Earth's surface and has a peak at the top; a group of mountains is a mountain range
Valley	a low place on Earth that is often located between two mountains or hills
Island	land with water all around it
Peninsula	land with water on three sides; it is attached to a larger body of land
Plain	a large, flat area on Earth's surface
Plateau	land that rises high above Earth's surface and is flat on the top
Canyon	a type of valley carved out of the earth by wind and rain
Desert	an area that receives very little rain
Coast	land on the edge of a large body of water

Help Pages

States and Capitals



Help Pages

Levels of Government

Level	Leader	Area It Has Control Over	Services
Local	mayor	town or city	schools, parks, roads, police department, fire department, libraries
State	governor	state	schools, highway, state universities, parks
National	president	United States	keeping the country safe, talking to other countries, parks

Branches of Government*

	Role	Local Level	State Level	National Level
Legislative	make laws	city council	State Senate and State House of Representatives	Senate and House of Representatives (together known as Congress)
Executive	enforce laws	mayor	governor	president
Judicial	interpret laws	judge	judge	judge

*Typical structure; may not apply to all states and localities.