



Level 2

Social Studies

2nd Edition

Help Pages

Help Pages

Glossary

adobe	house with bricks made of clay and straw
ancestor	a family member who lived before us
appoint	choose; leaders can <i>appoint</i> others
barter	trade one thing for another
calendar	a type of grid that shows time
capital	the city where the members of a government work
capital resources	the things workers use to make goods or give services
cardinal directions	north, south, east, and west
cause	the reason something happens
citizen	a person who lives in a country and shares the same rights with others; a member of a community
city	a community where many people live and work; urban area
colony	an area under the rule of another country
community	a group of people with something in common
compass rose	the symbol that shows directions on a map


Help Pages

Glossary

consequence	what happens because of something else
constitution	a written plan for a government
continent	a large body of land
country	an area made up of many regions or states; nation
culture	a way of living
custom	a special activity that the people in a group join in
Declaration of Independence	a document written in 1776 which explained why the people in America were not happy under British rule
Eastern Hemisphere	half of Earth, east of the Prime Meridian
effect	something that happens because of something else
elect	to choose by voting; citizens <i>elect</i> leaders
Equator	the imaginary line that separates the Northern and Southern Hemisphere
explorer	a person who journeys into unknown lands
game	animals hunted for food
globe	a model of Earth

Help Pages

Glossary

good	an object you can see, touch, and buy
government	a group of people who make laws and run communities
governor	the leader of a state
grid	a series of horizontal and vertical lines that make boxes
group	a number of people
hill	raised land that is smaller than a mountain
horizontal	going side to side 
human resources	workers
immigrant	a person who moves from one country to another
income tax	money the government takes out of a person's pay
independence	being free from someone else's rule
Indians	the first people to live in the Americas; sometimes called Native Americans
intermediate directions	the areas between the cardinal directions on a compass rose (northeast, northwest, southwest, and southeast)
island	land with water all around it

Help Pages

Glossary

lake	a body of water surrounded by land
landform	a natural formation on the surface of Earth
landform region	an area with common landforms
landmark	something that helps people to know a place
law	a rule made by the government
leader	someone who is in charge of other people
local government	a government that runs a town or city
map key	shows what a symbol on a map means
mayor	the leader of a town or city
mountain	land that rises high above Earth's surface; has a peak at the top
mountain range	a group of mountains
national capital	the city where the members of the national government work; Washington, D.C.
national government	the government that runs the United States

Help Pages

Glossary

Native Americans	the first people to live in the Americas; sometimes called Indians
natural resources	things found in nature that people use (such as sunlight, wind, water, and soil)
need	a thing that everyone must have to live (such as food, water, clothing, shelter, and air)
neighborhood	the place where people live with their neighbors
North Pole	the very top of Earth
northeast	the direction between north and east
Northern Hemisphere	the top half of Earth
northwest	the direction between north and west
ocean	a large body of salt water
peninsula	land with water on three sides
pilgrim	a person who travels for religious reasons
plain	a large, flat area of land on Earth's surface
plateau	land that rises above Earth's surface; has a flat top

Help Pages

Glossary

President	the leader of the United States
produce	to make
public transportation	a way for people to get around without driving their cars (such as buses, trolley cars, subways, and boats)
region	an area that has some things in common
responsibilities	the things citizens do for the good of their communities
rights	the things all citizens deserve which are protected by the government
river	a body of water that moves
route	a path from one place to another
rural community	a community with open land and few people or buildings
sales tax	money that goes to the state when a person buys something
schedule	a list of times when the bus, train, or subway will stop at a certain place
service	what a worker does to help other people

Help Pages Glossary

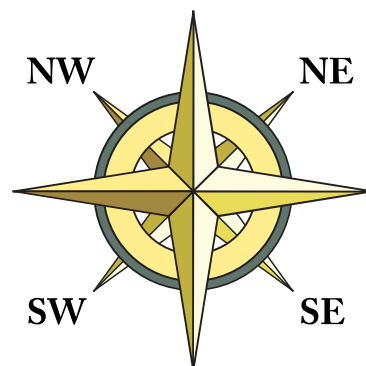
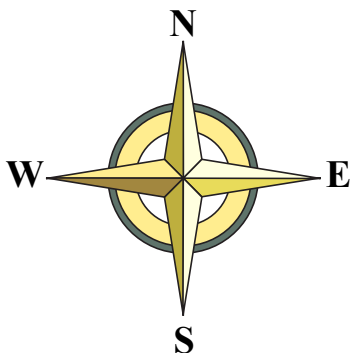
settler	a person who lives in a colony and helps it grow
South Pole	the very bottom of Earth
southeast	the direction between south and east
Southern Hemisphere	the bottom half of Earth
southwest	the direction between south and west
state	part of the United States with its own laws and leaders
state government	a government that runs a state
suburb	a community with many people, few tall buildings, and some open land around homes
symbol	a person, place, thing, or picture that stands for something else
tax	money that the government collects from its citizens
tepee	a cone-shaped tent made of animal skin
town	a community that is small and does not have many large buildings
trade	when people buy, sell, and exchange goods

Help Pages

Glossary

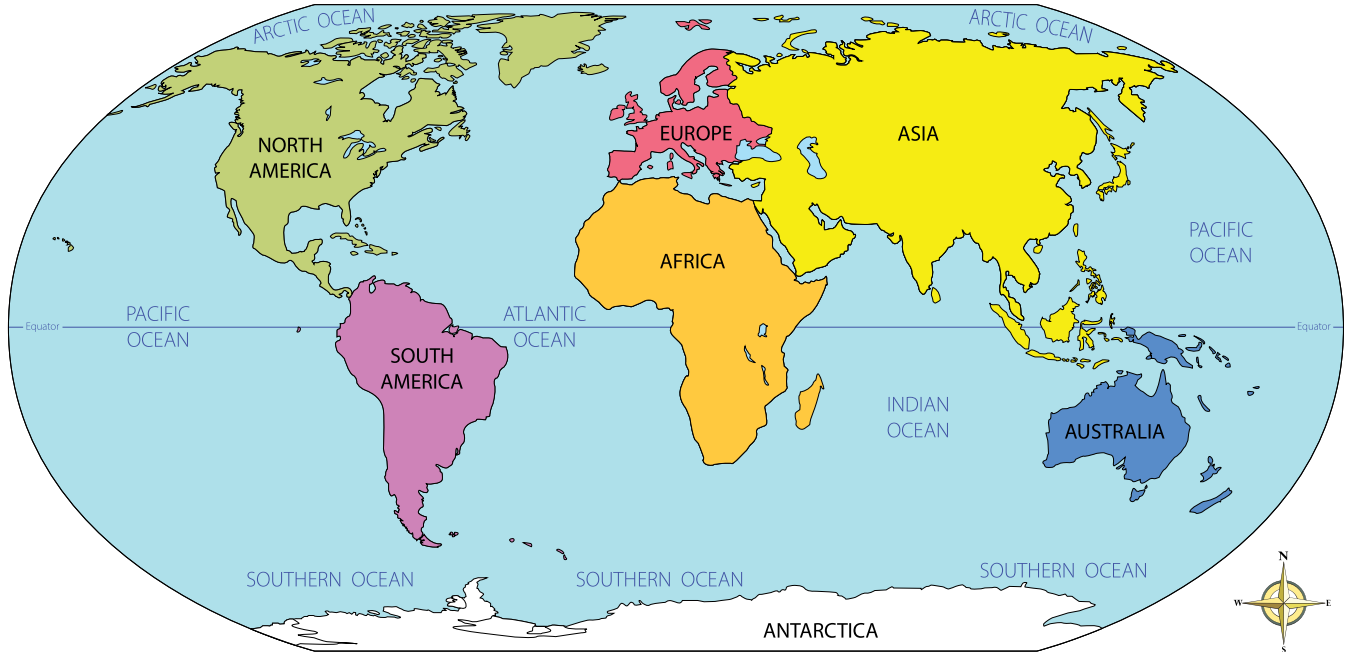
tribe	a group of people with the same ancestors and culture
United States Consitution	a document written in 1787 that created the United States government
urban area	a community where a large number of people live and work; city
valley	lowlands with hills or mountains on the sides
vertical	going up and down \updownarrow
vote	to say who or what you choose
want	a thing that someone would like to have
Western Hemisphere	half of Earth west of the Prime Meridian
world trade	countries trading with other countries

Compass Rose



Help Pages

World Map



United States Map



Help Pages

Continents

Africa
 Antarctica
 Asia
 Australia
 Europe
 North America
 South America

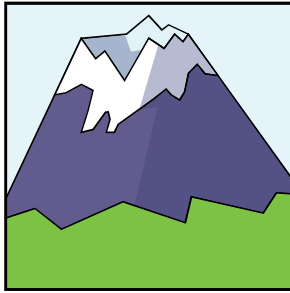
Oceans

Arctic
 Atlantic
 Indian
 Pacific
 Southern

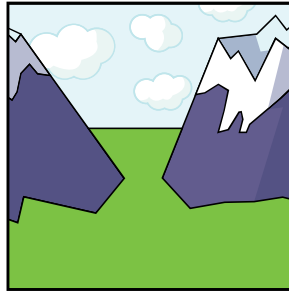
Levels of Government

Level	Leader	Area It Has Control Over	Services
Local	mayor	town or city	schools, parks, roads, police department, fire department, libraries
State	governor	state	schools, highway, state universities, parks
National	president	United States	keeping the country safe, talking to other countries, parks

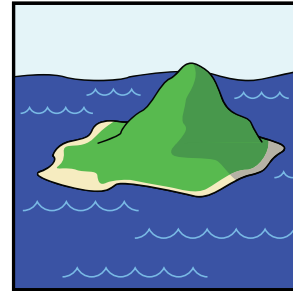
Help Pages



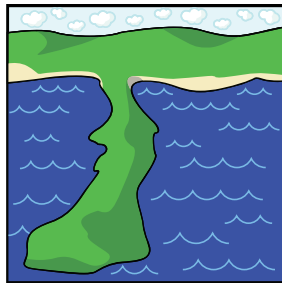
Mountain



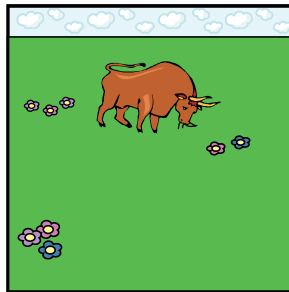
Valley



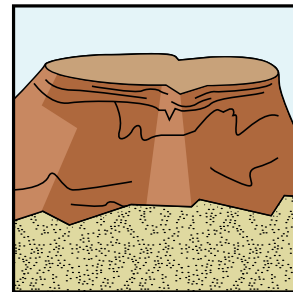
Island



Peninsula



Plain



Plateau

Types of Landforms

	Definition
Mountain	land that rises high above Earth's surface and has a peak at the top; a group of mountains is a mountain range
Valley	a low place on Earth that is often located between two mountains or hills
Island	land with water all around it
Peninsula	land with water on three sides; it is attached to a larger body of land
Plain	a large, flat area on Earth's surface
Plateau	land that rises high above Earth's surface and is flat on the top