

Sample Lesson #2

1. If a one-syllable word has two vowels, the first vowel usually stands for the **long** sound and the second vowel is **silent**. In the following examples, the first vowel is **u**, so the words have a **long u** sound.

Examples: flute, suit, tube

Choose the word that completes each sentence. Write the word on the line.

Jason will have a piece of _____ for his snack.

flute

fruit

fun

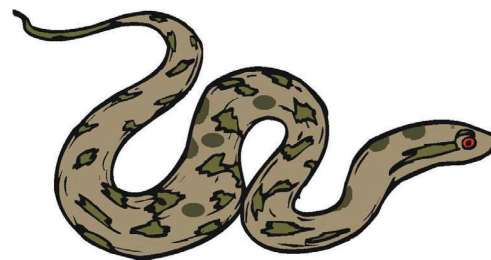
Michael will wear his new _____ to the party.

suit

sing

soup

2. Write the two words that make up each compound word.



shoelace → _____ + _____

rattlesnake → _____ + _____

3. Make each word plural.

clock - _____ bird - _____

4. Underline each word that has a **long i** sound.

fight

fin

wig

mile

time

give

line

5 – 6. Read the words. Write each word under the correct heading.

face carrot stage care celery gold gym guess

soft c

hard c

soft g

hard g

7. Read the sentence. Underline the words with the **long u** sound. Then, write them on the lines.

I got a blue suit for my birthday in June.



8. Read the words in the box. Write the words with the same vowel sound in the correct list. Add a word of your own to each list.

step crop nest happy sock flap

short a

short e

short o
