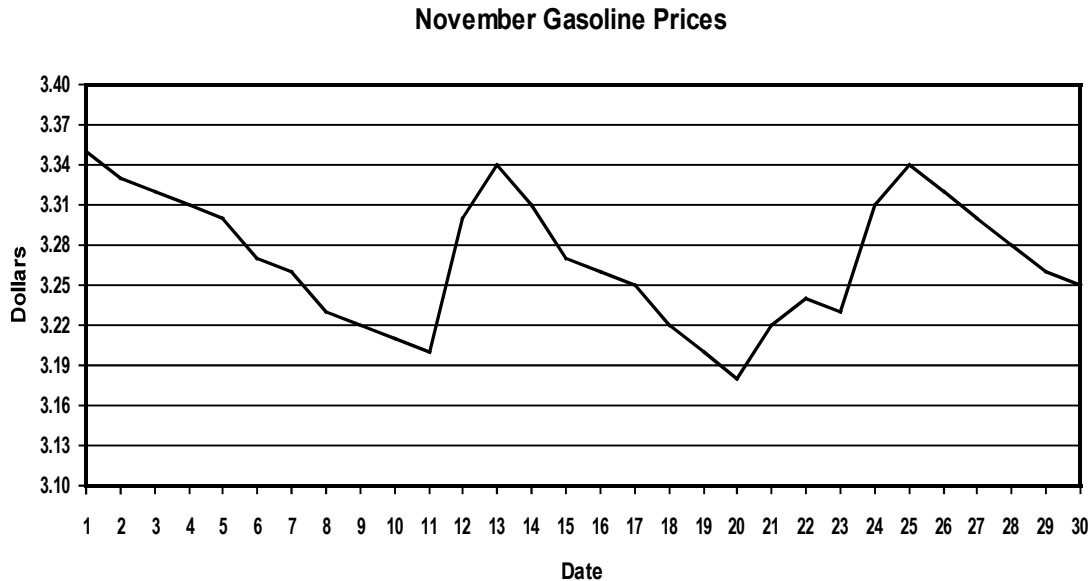


## Sample Lesson #3

- RI.4.7 1 – 6. This line graph shows average daily gasoline prices in Pleasantville for one month.



On what date was the price of gasoline the highest? \_\_\_\_\_

On what date was the price of gasoline the lowest? \_\_\_\_\_

What was the price of gasoline on November 17? \_\_\_\_\_

By the end of the month, was the price of gasoline higher or lower than it was at the beginning of the month? \_\_\_\_\_

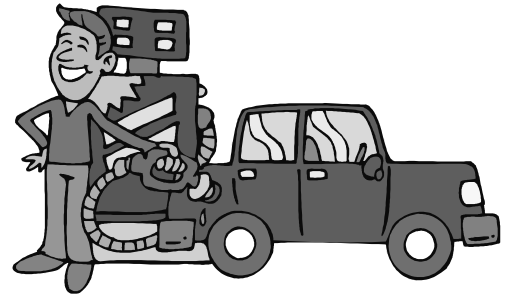
What information is missing from this graph?

- A) price
- B) title
- C) dates
- D) year



Where might you find a graph with this information?

- A) a book about the “energy crisis” in the 1970’s
- B) a newspaper article about monthly gasoline prices in the Pleasantville Chronicle
- C) a pamphlet on “How to Save at the Gas Pump”



- L.5.1b 7. Complete the sentence by adding the present perfect form of the verb *explore*.

Many adventurers \_\_\_\_\_ the rugged areas of the state.

- L.5.1 8. Underline the indefinite pronoun. Choose the correct verb.

A little (go / goes) a long way!

- L.5.1a 9. Choose the conjunction that best completes this sentence.

We won't be home until late, (but / so / and) feed the dog now.

- L.5.3a 10. Combine these sentences to make a compound sentence. Use a coordinating conjunction (*and, so, but, for, or*).

Please stop at the market for some fruit. See if they have any flowers.

---



---