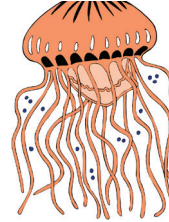
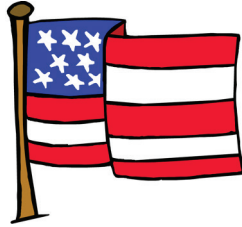
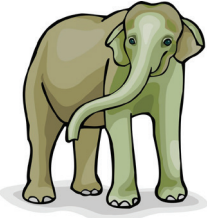


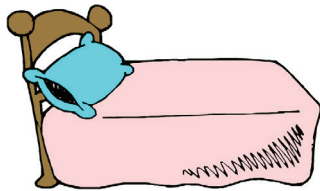
Sample Lesson #2

1.

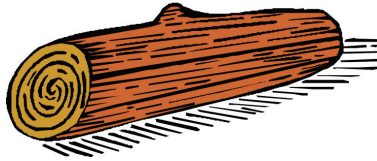


RF.K.2b

2.



bed



RF.K.3b

3.



Do you like cats?

L.K.2b

Directions:

1. Say the name of each picture. Clap the number of beats, or syllables for each picture. Circle the pictures that have three syllables.
2. *Bed* has the **short e** sound. Say the name of each picture. Circle the picture if its name has the **short e** sound.
3. A question mark (?) comes at the end of a question. Circle the question mark at the end of the question.

4.



a i

w n

RF.K.3b

5.



o o

...



o o

...

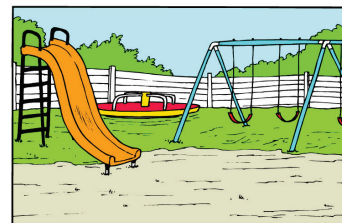
RF.K.2a/c

6.

to



I go to the



park

L.K.1e

Directions:

- Say the name of the picture. Circle the letter that stands for its middle sound. Print the letter on the line to complete the word.
- Fill in the missing beginning letter sounds to complete the rhyming words. Trace the rest of the letters.
- Trace the word *to*. Write the letters that spell *to* in the boxes. Use the shapes to help you. Circle the word *to* in the sentence.