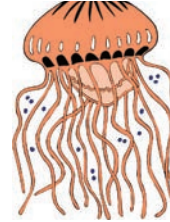


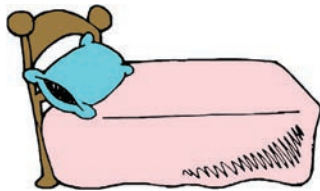
Sample Lesson #2

1.



RF.K.2b

2.



bed



RF.K.3b

3.



Do you like cats?

L.K.2b

Directions:

1. Say the name of each picture. Clap the number of beats, or syllables for each picture. Circle the pictures that have three syllables.
2. *Bed* has the **short e** sound. Say the name of each picture. Circle the picture if its name has the **short e** sound.
3. A question mark (?) comes at the end of a question. Circle the question mark at the end of the question.

4.



a i

w n

RF.K.3b

5.



ap

ap

RF.K.2a/c

6.

to



I go to the



park .

L.K.1e

Directions:

4. Say the name of the picture. Circle the letter that stands for its middle sound. Print the letter on the line to complete the word.
5. Fill in the missing beginning letter sounds to complete the rhyming words. Trace the rest of the letters.
6. Trace the word *to*. Write the letters that spell *to* in the boxes. Use the shapes to help you. Circle the word *to* in the sentence.