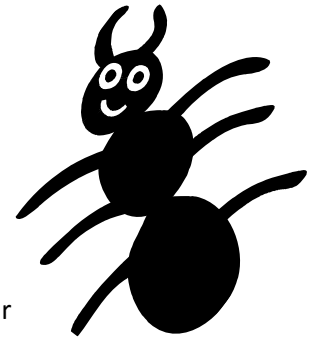


An Ant's Eye View

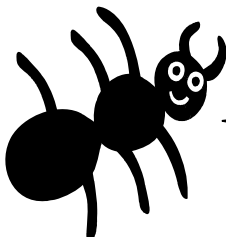
A large ant has just invaded your picnic.

The ant is .5 inches tall. Measure picnic items such as a can of soda, a blade of grass, a peanut butter and jelly sandwich, an apple, or other objects that might be found at a picnic.



Use the chart below to discover how many times taller than the ant each object is. Then, compute how tall each object would be if it were that many times taller than you. Your height in inches? _____"

ITEM	Height <u>rounded to the nearest inch</u>	How many times taller than the ant is the object? Calculate the height of the object divided by the height of the ant.	How many times taller is this object than the ant?	How tall would the item have to be in order to be that many times taller than you? Substitute your height in the example.
watermelon	13 inches high	$13 \div .5 = 26$ times	The watermelon is 26 times taller than the ant.	I am 48" tall. $26 \times 48 = 1248$ inches Convert to feet by dividing by 12 = a 104 feet high watermelon
blade of grass	6 inches high	$6 \div .5 = 12$	The blade of grass is 12 times taller than the ant.	$12 \times 48 = 576$ inches Convert to feet by dividing by 12 = a _____ feet high blade of grass
wildflower	18" high	$18 \div .5 = 36$	The wildflower is _____ times taller than the ant.	_____ $\times 48 =$ _____ inches $\div 12 =$ _____ feet high wildflower
Go back and recalculate the height of each object based on your height in inches. Use your height for the rest of the calculations.				
pretzel stick	8" high	_____ $\div .5 =$ _____	The pretzel stick is _____ times taller than the ant.	_____ \times _____ " = _____ inches $\div 12 =$ _____ feet high wildflower
sandwich				



For more great summer learning opportunities, go to www.summersolutions.net