

Sample Lesson #3

A New Era Begins

Ohio's canals provided jobs for settlers across the state. Workers dug canals and built boats. Boatmen, Hoggees (mule drivers), and toll collectors were needed once the canals were finished. Along the route, people provided places to eat and sleep.

Shipping was less costly and faster than ever before. So merchants began to ship their goods on canals, and profits for Ohio farmers soared. Mills and cities sprung up near the canals, as more and more settlers came to Ohio. The citizens prospered, and Ohio became the third most-populated state in the union.

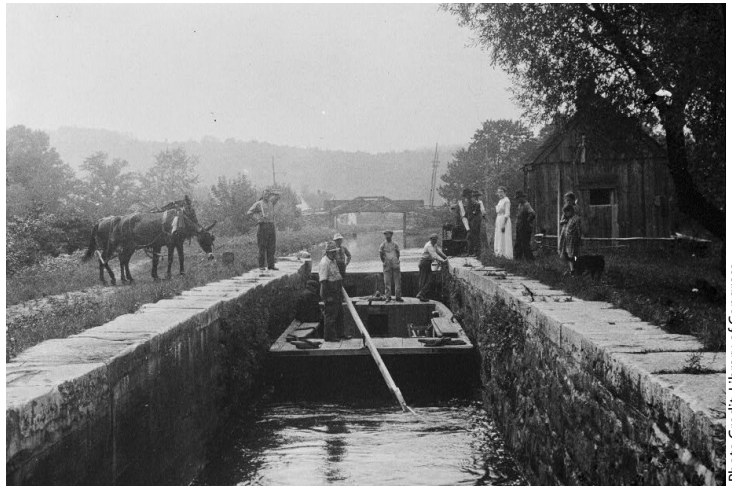
The canals were very important to Ohio's growth. However, the **boom era**¹ lasted only about fifty years. In 1913, an unexpected event brought an end to the canals. Heavy rains and snow melt caused a great deal of flooding. Locks and canal banks were damaged or destroyed. The flood stopped the movement of people and goods on Ohio canals.

The steam locomotive had been invented, and a new group of immigrants were laying railroad tracks across the country. During the 1840s and 1850s, railroads appeared in Ohio. The freight train soon began to move Ohio's natural resources and products to other states.

Trains could travel even faster than canal boats and could carry more **tonnage**². They could roll over hills. They could go directly through mountains by way of tunnels. Workers could lay railroad tracks anywhere. They were not forced to follow creek beds as canals were.

The railroad helped bring the **Industrial Revolution**³ to Ohio. Trains made it even easier to transport Ohio's natural resources and raw materials to other parts of the country. More immigrants came to Ohio looking to settle into a new life. They provided a workforce for factories in cities along the railroad. New ideas were born. Inventors and entrepreneurs found ways to improve the lives of Ohioans. A new era had begun.

1. In the passage, underline the sentences that tell why freight trains were better than canal boats for shipping goods.



Canal boat with mule team for towing

Photo Credit: Library of Congress

1 **boom era**: a time of large growth and production

2 **tonnage**: the weight of cargo in tons

3 **Industrial Revolution**: time when people built machines and large factories; industries grew

2. The title of the lesson is, “A New Era Begins.” What does this mean?
- A) The time of the steam locomotive had begun.
 - B) It was the beginning of the 1800s.
 - C) A new president had been elected.
 - D) all of these
3. Which list shows how transportation advanced in Ohio during the 1800s?
- A) covered wagon > freight train > canal boats
 - B) canal boats > covered wagon > freight train
 - C) covered wagon > canal boats > freight train
 - D) none of these
4. Study the list of names below. What do they all have in common?
- | | | |
|-----------------------|-------------|-----------------|
| John Rankin | John Parker | Sojourner Truth |
| Harriet Beecher Stowe | Levi Coffin | John Brown |
- A) They were elected to the Ohio General Assembly during the 1800s.
 - B) They were abolitionists who were born in or lived in Ohio.
 - C) They were military leaders during the American Civil War.
 - D) They were wealthy landowners who created jobs in Ohio.
5. Match each cause and effect. Write the letter of the item in the correct place.

Cause	Effect
During the 1840s and 1850s railroads appeared in Ohio.	
	Locks and canal banks were damaged or destroyed.
Mills and cities sprung up near the canals; more settlers came to Ohio.	

- A) Ohio became the third most-populated state in the union.
- B) It became easier to transport Ohio’s natural resources and raw materials.
- C) In 1913, heavy rains and snow melt caused a great deal of flooding.